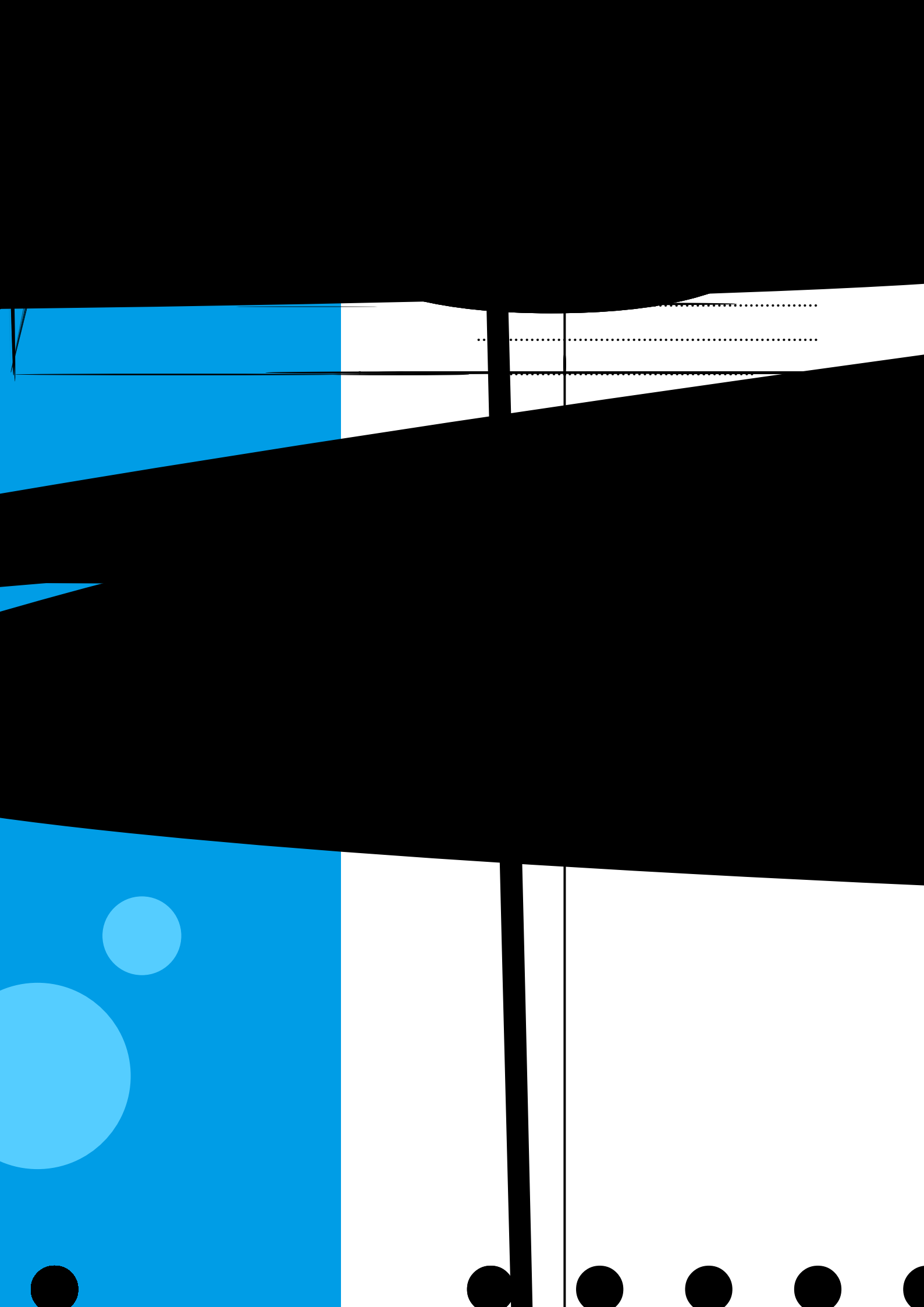




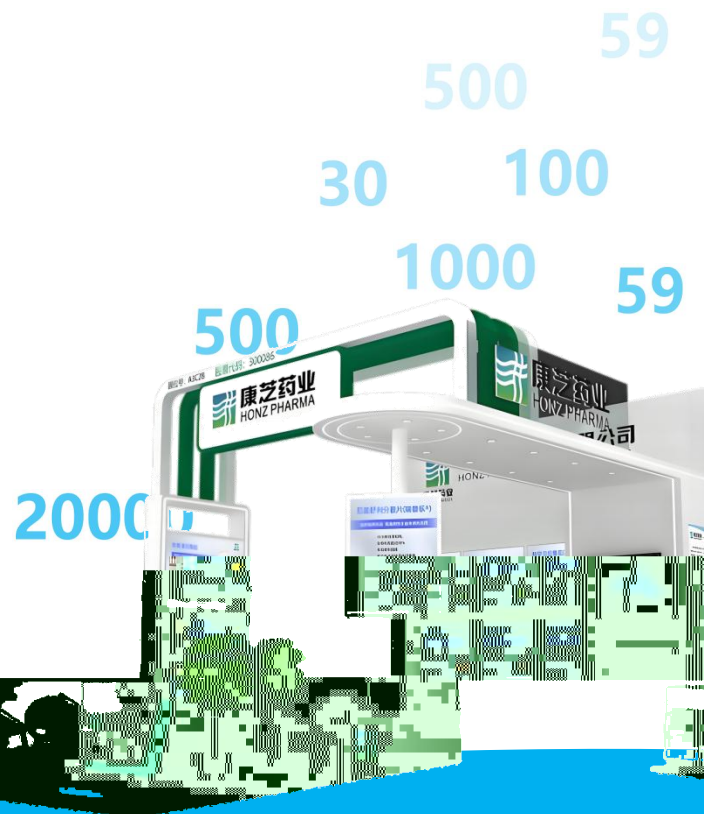
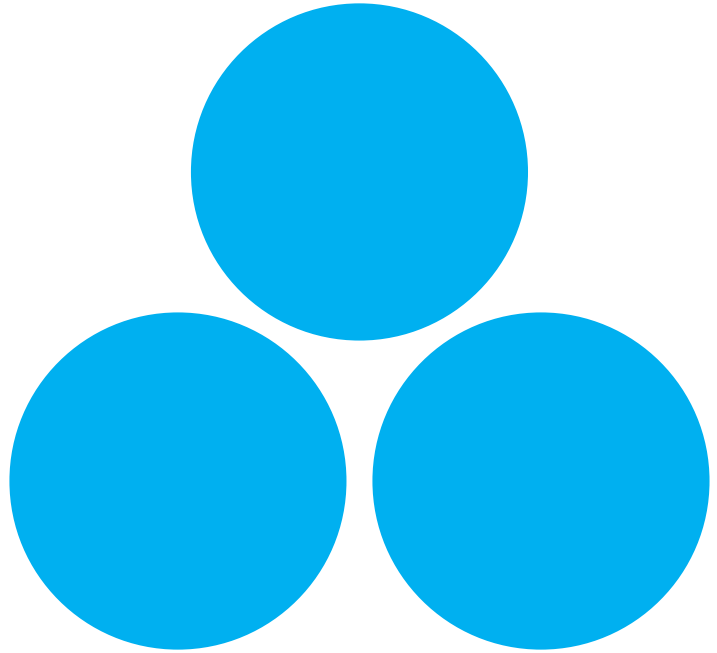
康芝药业
HONZ PHARMA
300086

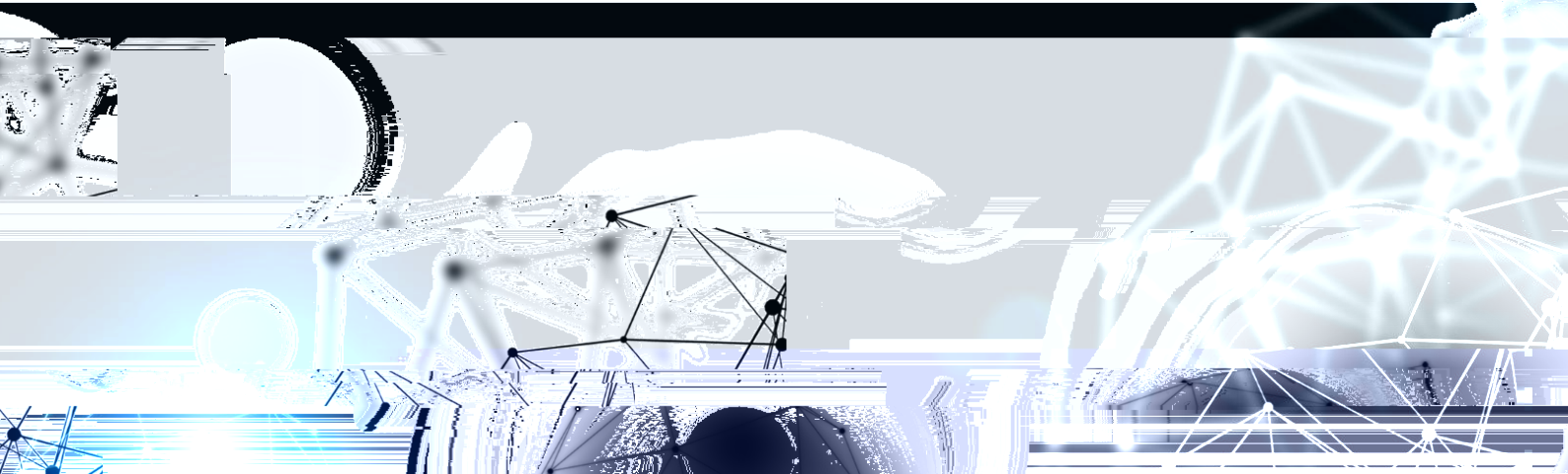
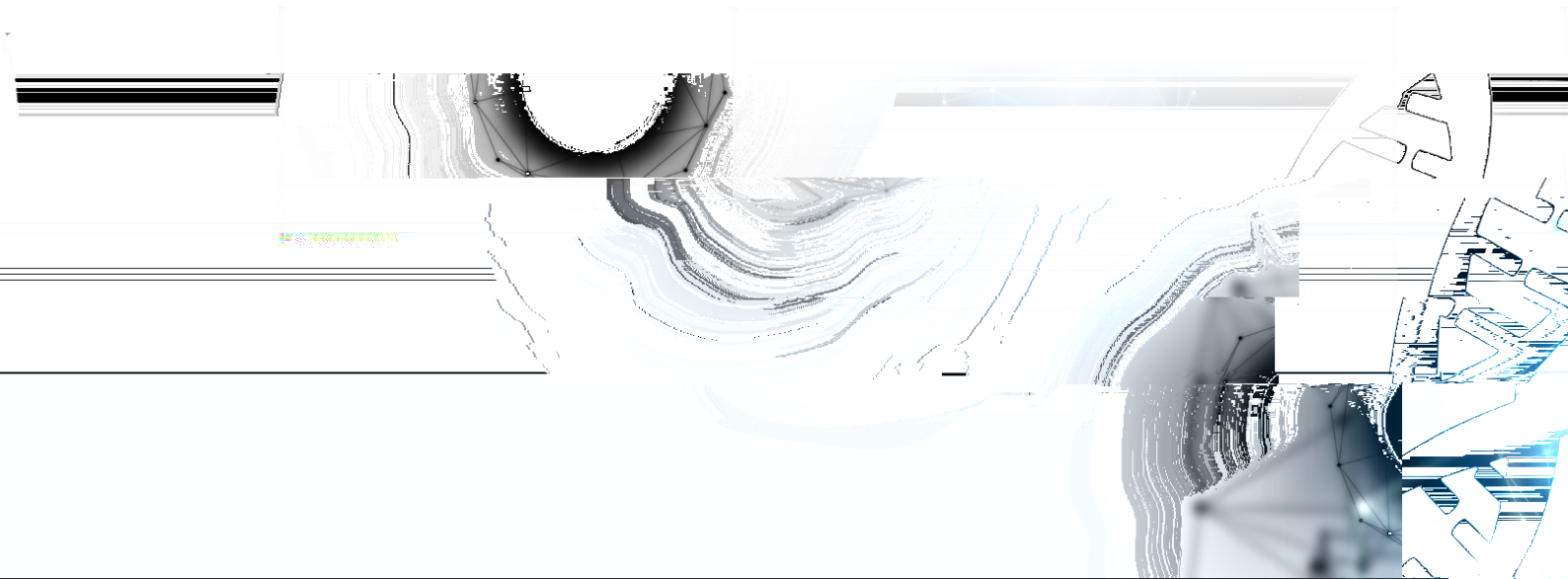


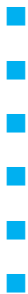


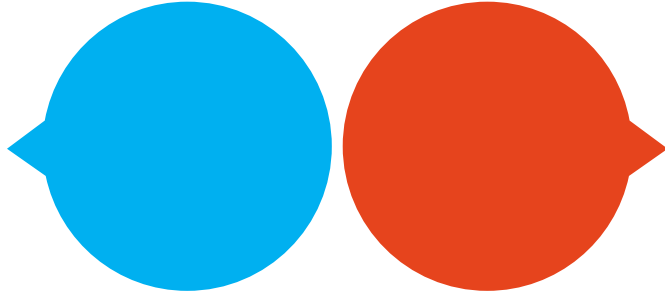












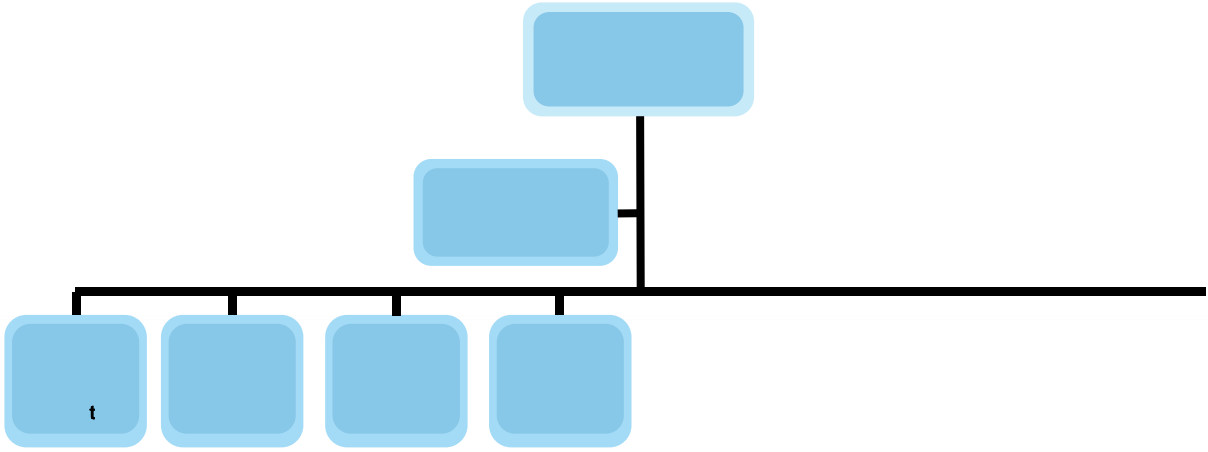
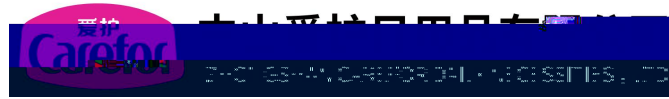
Green Production, Low-carbon Operation









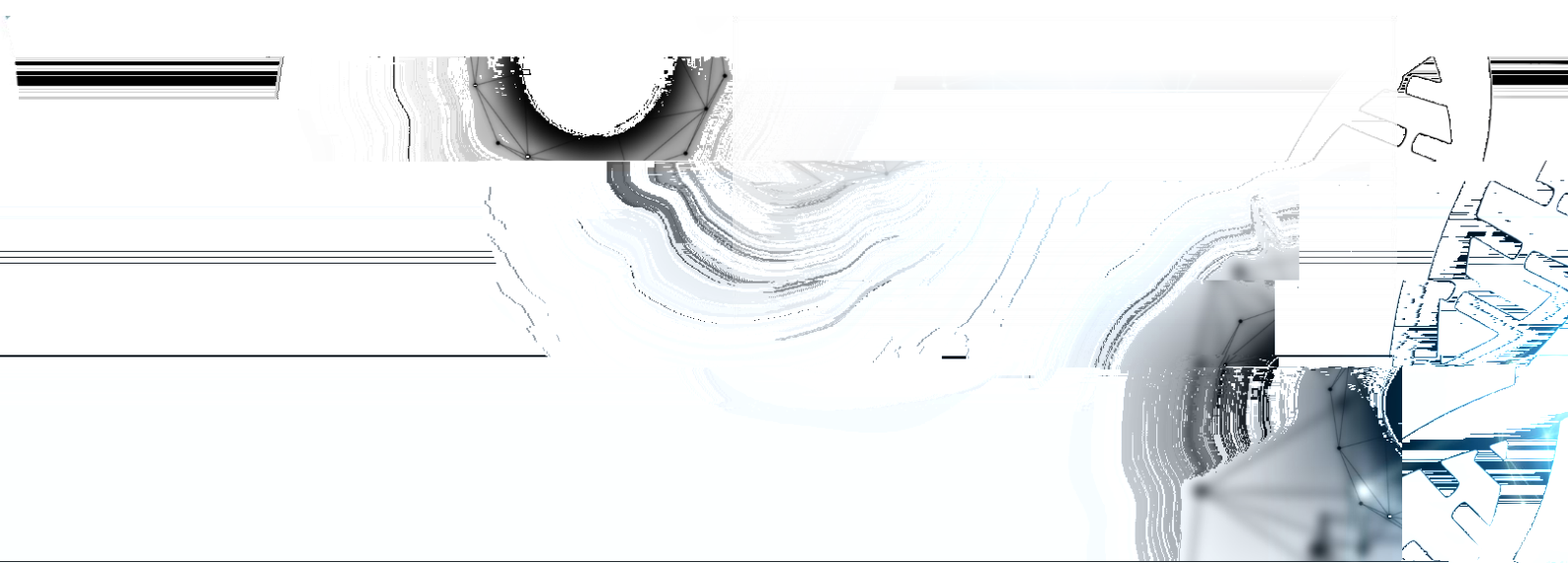


.y

...

			Q

J . a . ò { J





Section 1			
Cell 1.1	Cell 1.2	Cell 1.3	Cell 1.4
Cell 1.1	Cell 1.2	Cell 1.3	Cell 1.4
Cell 1.1	Cell 1.2	Cell 1.3	Cell 1.4
Cell 1.1	Cell 1.2	Cell 1.3	Cell 1.4

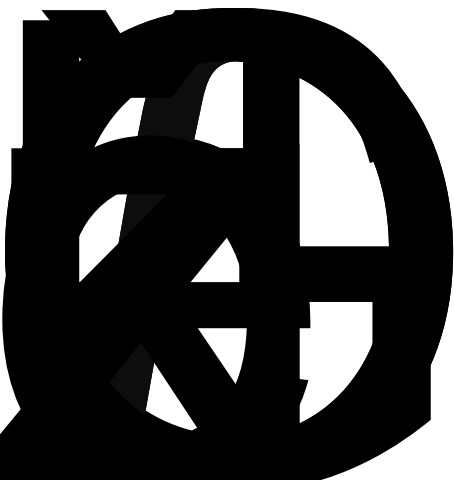
Section 2			
Cell 2.1	Cell 2.2	Cell 2.3	Cell 2.4
Cell 2.1	Cell 2.2	Cell 2.3	Cell 2.4
Cell 2.1	Cell 2.2	Cell 2.3	Cell 2.4
Cell 2.1	Cell 2.2	Cell 2.3	Cell 2.4

Section 3			
Cell 3.1	Cell 3.2	Cell 3.3	Cell 3.4
Cell 3.1	Cell 3.2	Cell 3.3	Cell 3.4
Cell 3.1	Cell 3.2	Cell 3.3	Cell 3.4



[Dark Blue Header]			
[Dark Blue]	[Dark Blue]	[Dark Blue]	[Dark Blue]
[Medium Blue]	[Medium Blue]	[Medium Blue]	[Medium Blue]
[Light Blue]	[Light Blue]	[Light Blue]	[Light Blue]
[Medium Blue]	[Medium Blue]	[Medium Blue]	[Medium Blue]
[Light Blue]	[Light Blue]	[Light Blue]	[Light Blue]

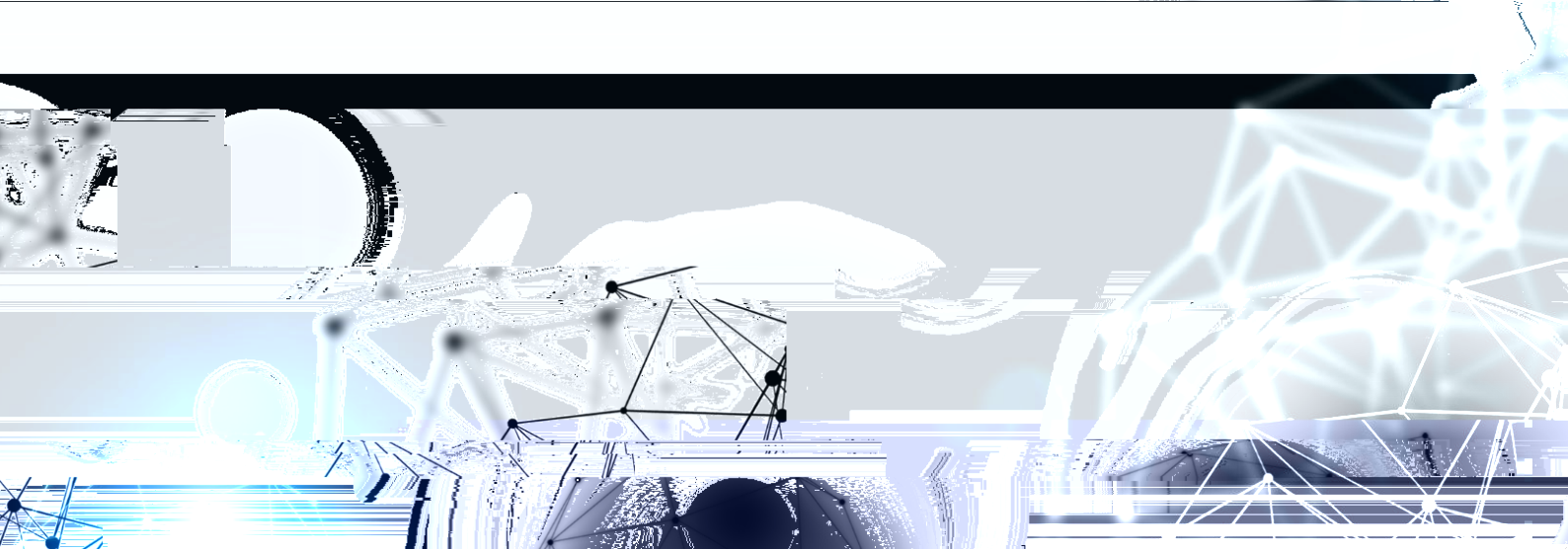
[Dark Blue Header]			
[Dark Blue]	[Dark Blue]	[Dark Blue]	[Dark Blue]
[Medium Blue]	[Medium Blue]	[Medium Blue]	[Medium Blue]
[Light Blue]	[Light Blue]	[Light Blue]	[Light Blue]

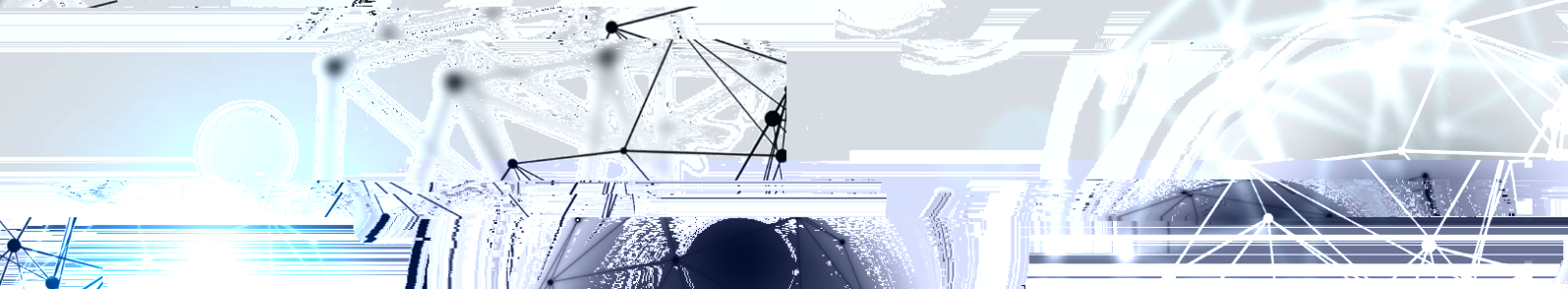
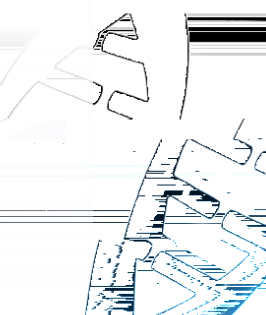


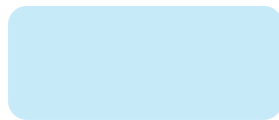
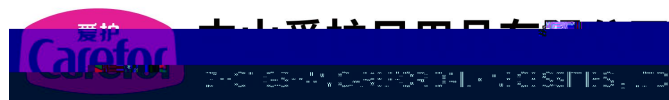




DOCTOR
FOR KIDS







Blue Header Bar

Blue	Blue	Blue	Blue				Blue
Blue	Blue	Blue	Blue	Blue	Blue	Blue	Blue

Light Blue	Light Blue	Light Blue	Light Blue	Light Blue	Light Blue	Light Blue	Light Blue
------------	------------	------------	------------	------------	------------	------------	------------

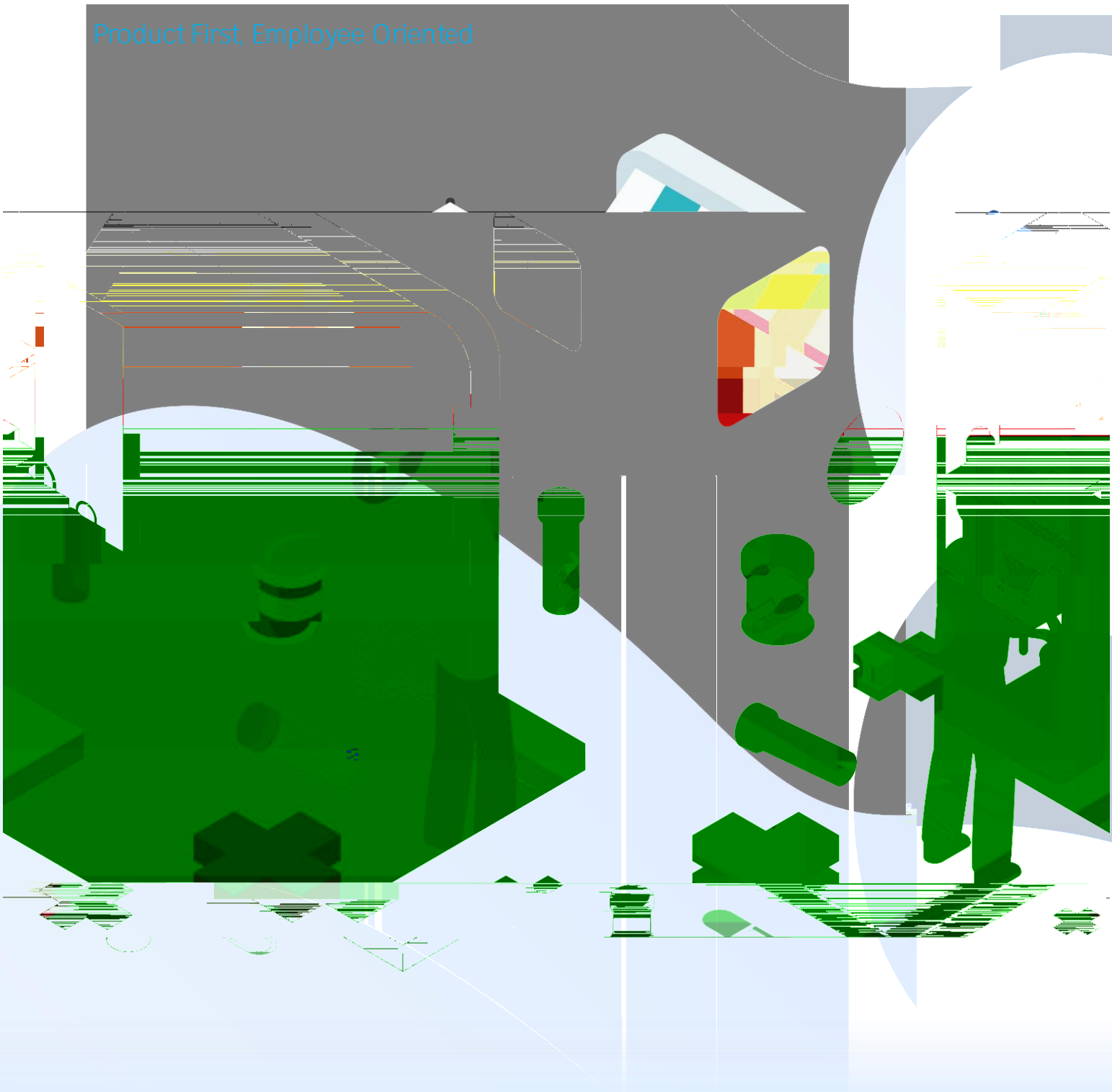
Light Blue	Light Blue	Light Blue	Light Blue	Light Blue	Light Blue	Light Blue	Black	Black
------------	------------	------------	------------	------------	------------	------------	-------	-------

Blue	Blue	Blue	Blue	Blue	Blue	Blue	Blue	Blue
------	------	------	------	------	------	------	------	------

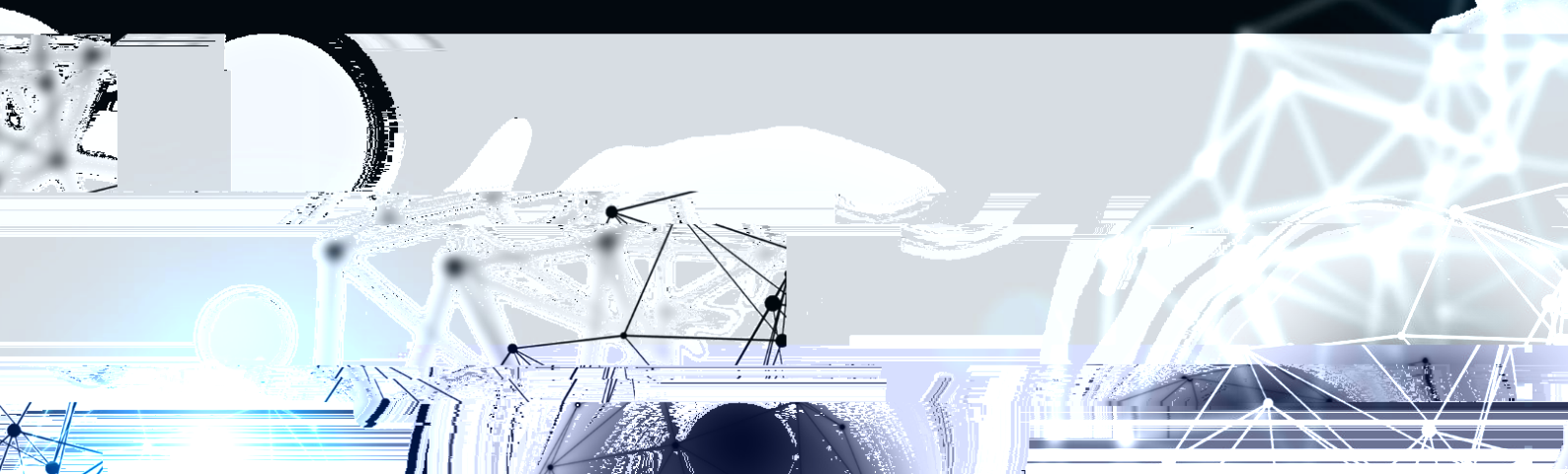
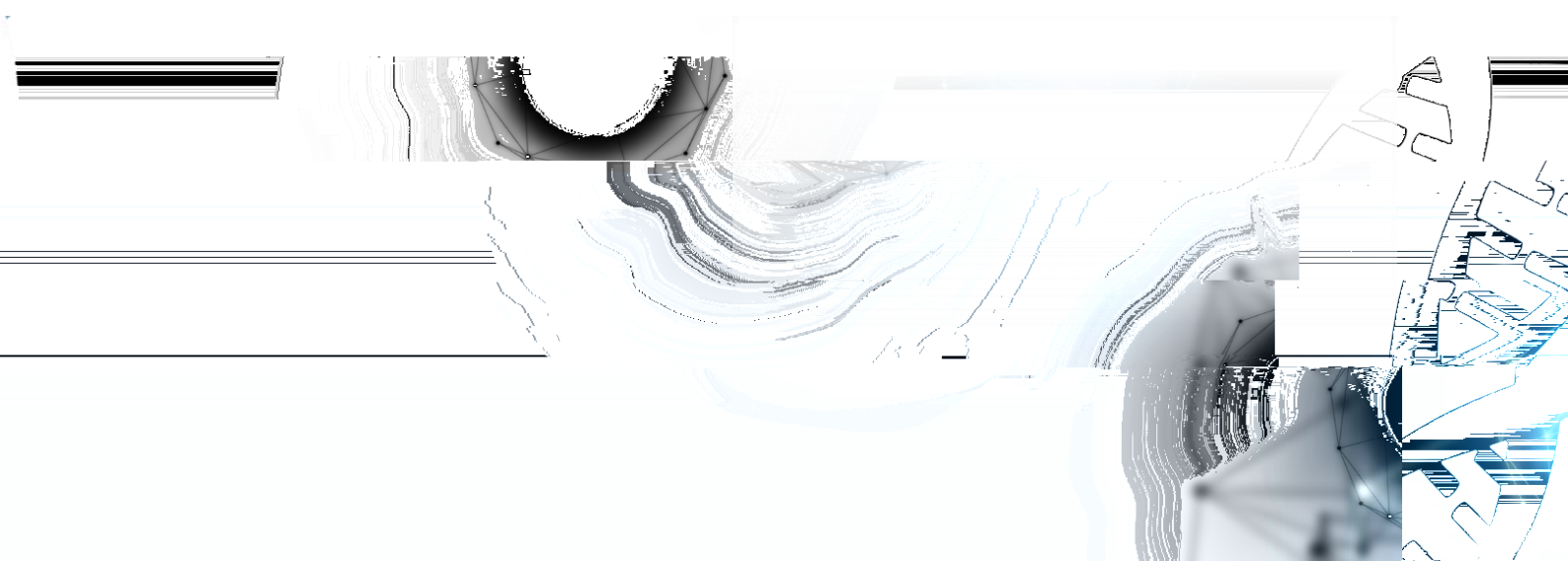
Light Blue	Light Blue	Light Blue	Light Blue	Light Blue	Black
------------	------------	------------	------------	------------	-------



Product First, Employee Oriented







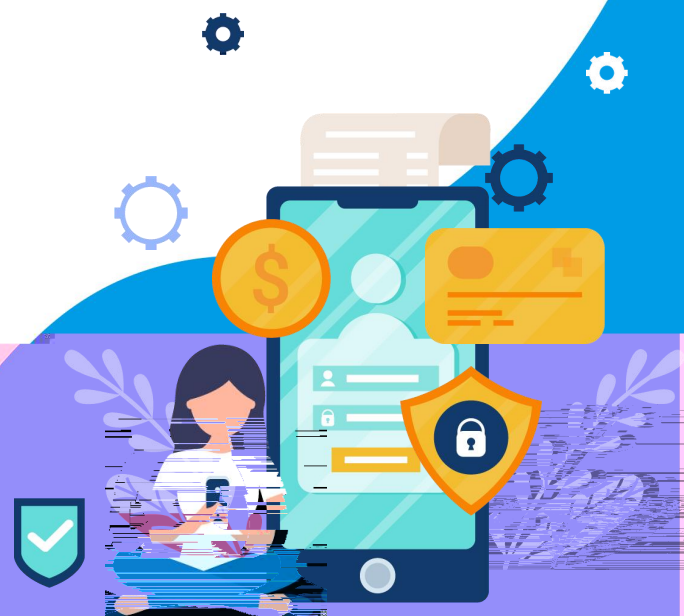


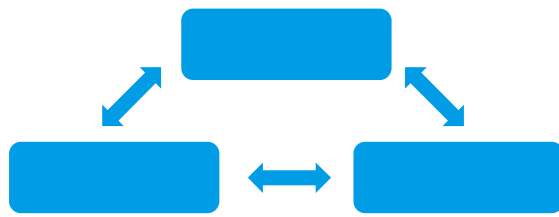


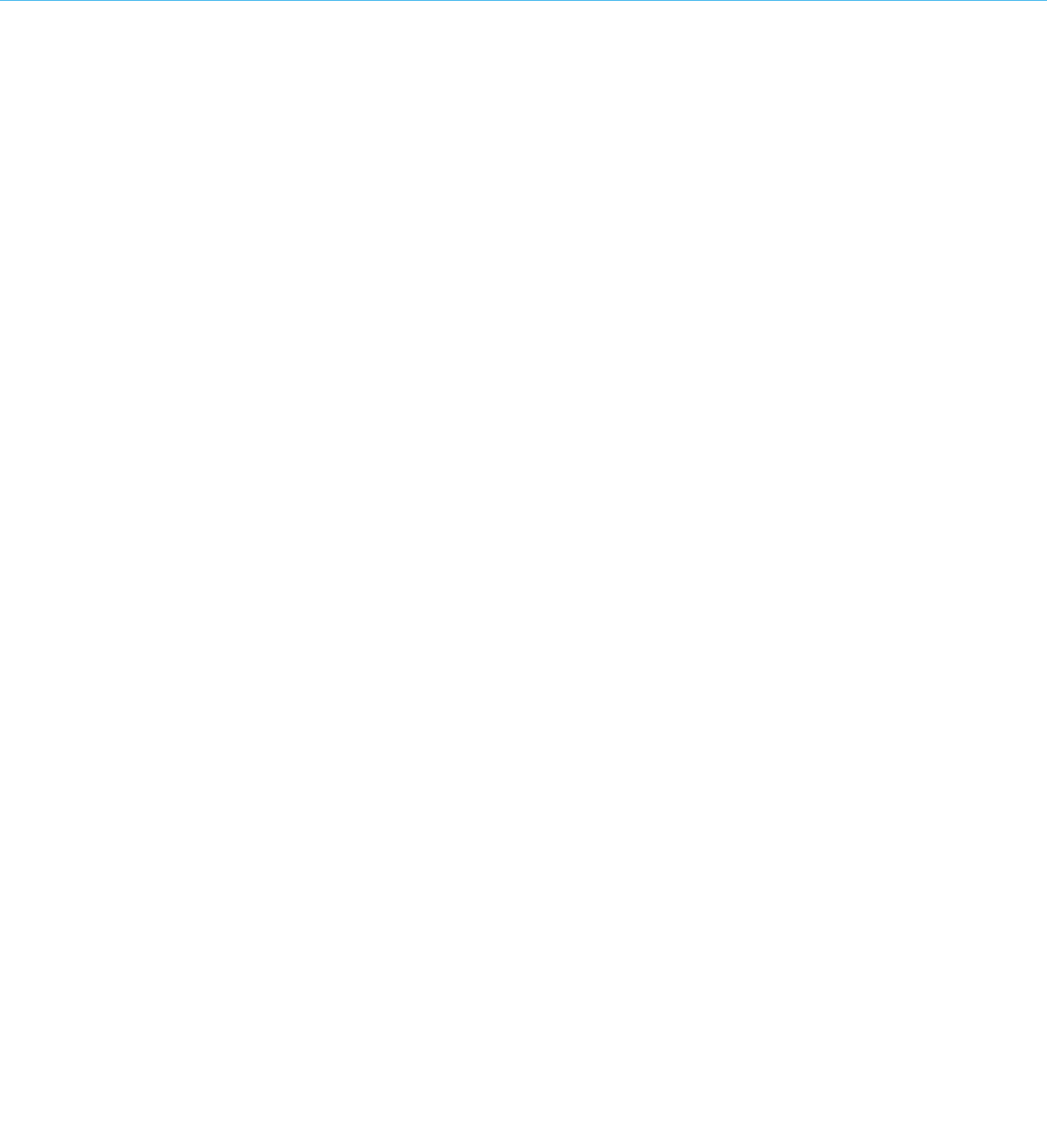
康芝药业

康芝药业 KANGZHI PHARMACEUTICALS







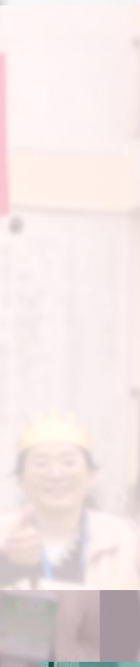
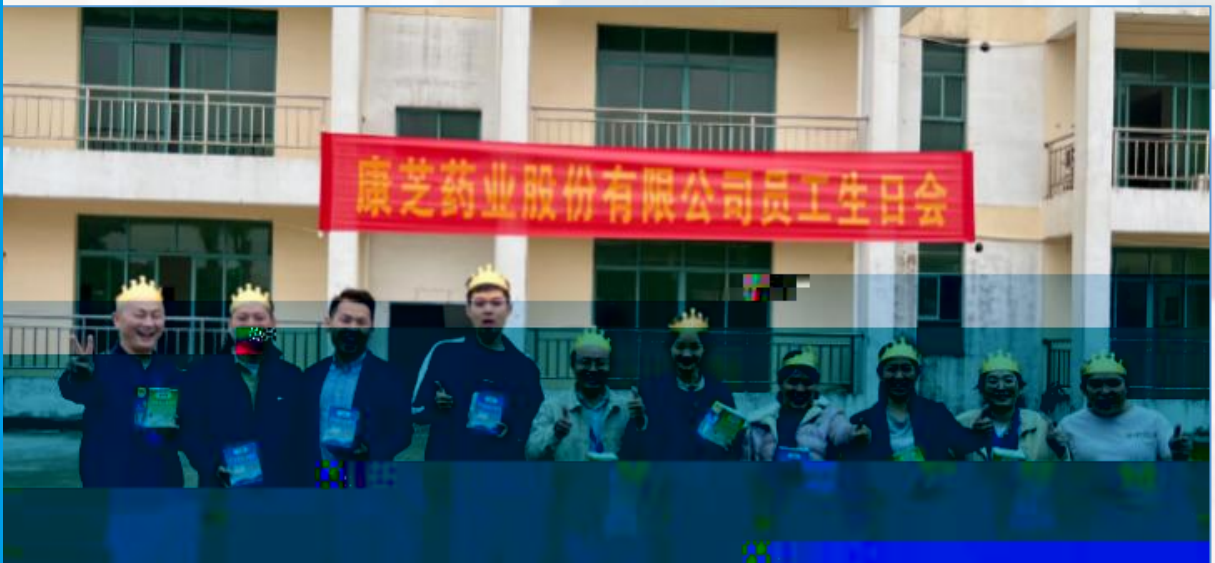








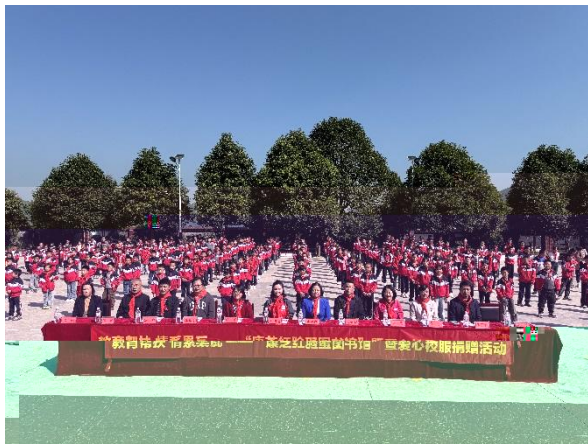












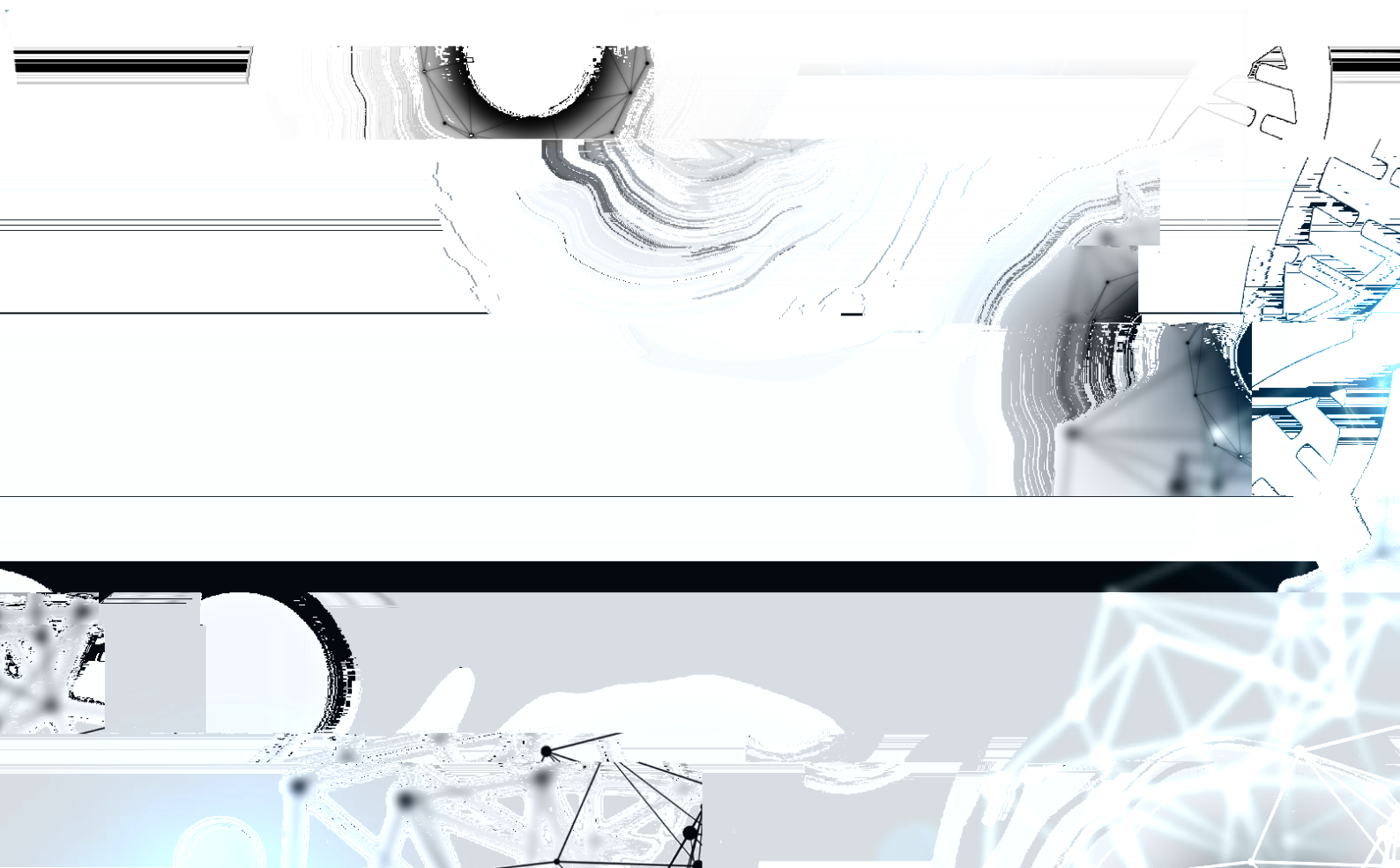
Compliance Management, Management First



康芝药业

CONZHI PHARMA





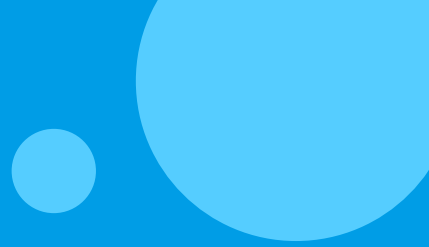
















康芝药业

CONZHI PHARMA



